

2017/18

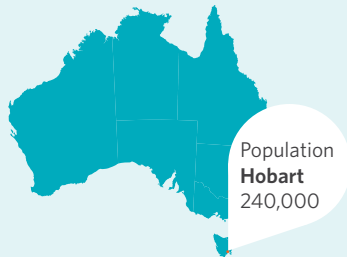
Our year in review



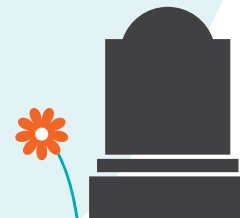
Why we do what we do



More than **65 million** people worldwide currently live with epilepsy (WHO)



250,000 people in Australia currently live with epilepsy, equating to more than the population of Hobart



On average **290** epilepsy-related deaths per year occurred in Australia between 2008-12

How we met our purpose

Who we supported



4,289 client interactions*

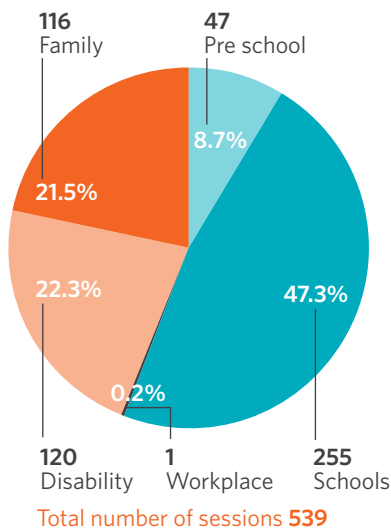
* And we supported so many more communities and individual support networks that work with and around the person living with epilepsy.



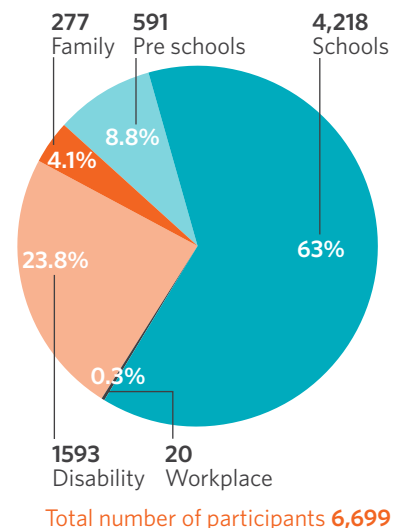
318 Epilepsy Management Plans (EMP) developed

Who we trained

Number of face-to-face sessions



Number of participants



Research happenings ...

1402 people are active research register members

A research partnership was formed with **Melbourne University**

The Australian Epilepsy Research Fund was established with **\$2m** government funding

This year we ...

- Developed and released epilepsy smart resources for aged care
- Licenced education programs to State epilepsy organisations and Premium Health
- Opened new op shops in Kensington and Beaumaris

How you engaged with us



Through our online presence

2,510 visits to our **Epilepsy Smart School website**

4,293 accessed our **Epilepsy Smart** resources

410 viewed our School Peer Program

31,936 visits to our **Epilepsy Foundation website**

8,359 EMP page visits

7,657 resource page visits

2,623 seizure first aid page visits



Through our Peer Support Groups

People living with epilepsy connected with each other through our Peer Support Groups.

10 groups

47 meetings

680 attended peer events

654 on our peer mailing list



Through our Op Shops

You helped us support the principles of environmental sustainability 'recycle, reuse and repurpose' through Op Shop giving and purchases, while raising money to support our vision.

74,847 customers

6 stores raising a gross total of **\$830,158**



By volunteering

You gave your time freely to support the work we do

230 active volunteers

45,549 hours



Through fundraising

9,044 donors

\$1,383,523 raised to support our vision



Through social media

19,867 Facebook followers

20,234 Facebook likes

1,588 Epilepsy Foundation Instagram followers

451 Epilepsy Foundation Op Shop Instagram followers

"It was a very valuable session. Thank you very much and we really appreciate your work, time and passion to help children with epilepsy and their parents. Thanks again."

Training recipient

"The team at the Epilepsy Foundation do a tremendous job helping out families during their time of need."

Support participant

"A level head, some wise words and someone to chat to has been very helpful."

Training participant